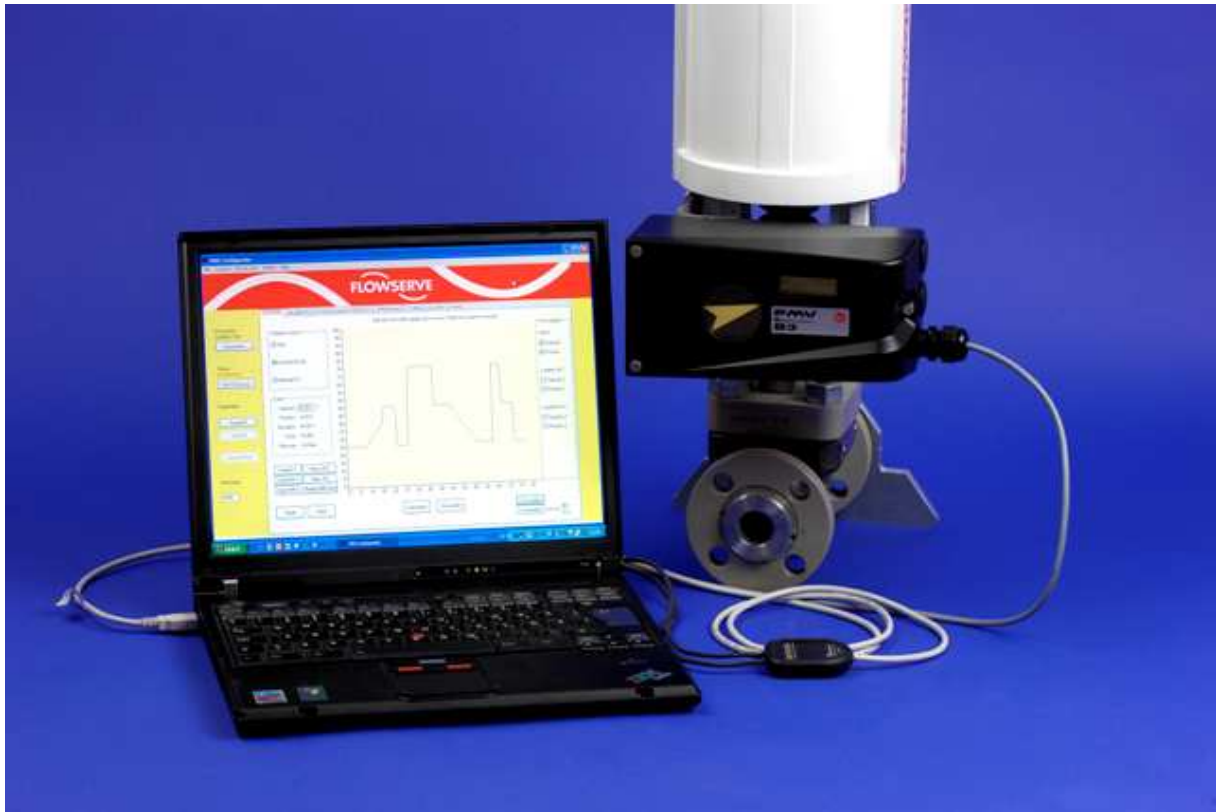


PC Configurator for D3/Logix 800



Users Guide

-Users Guide to PMV D3/Logix 800 PC configurator



Introduction

This software is designed to be used with Flowserve PMV products D3 or Logix 800. PMV D3/Logix 800 positioner must have HART[®] communication capability to be able to connect with the software.

An X in box H on the label indicates if HART[®] is possible.

Connection from PC to PMV D3/Logix 800 is done via a HART[®] modem connected to the PC and to terminals 1 & 2 on the PMV D3/Logix 800.

Any on the market available HART[®] modem can be used. PMV can also provide a HART[®] modem at additional cost.

System requirements

The host PC must be using Windows XP operative system, 5mb of disk space.

Dual Core computers can cause the configurator software to perform slow/irregular.

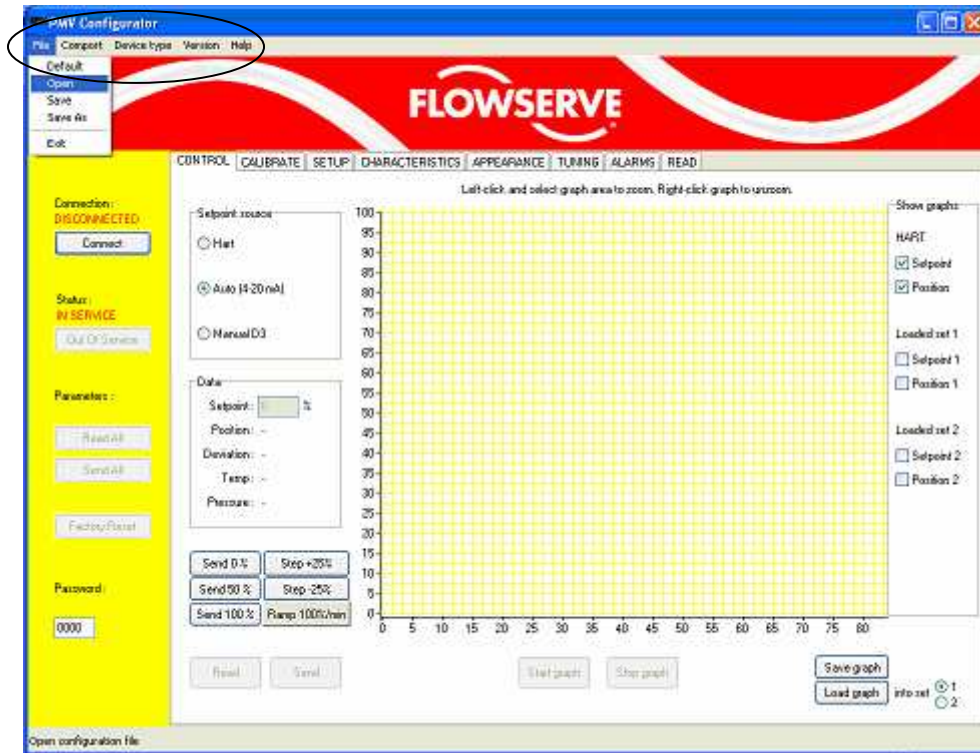
See Trouble shooting

WARNING

For use in Hazardous areas, all equipment (PC, modem and positioner) must be approved and certified according to international standards.

The latest revision of this user guide can be downloaded from www.pmv.nu/downloads. Revision number is indicated in the right hand top corner.

MENU selection



File Menu

Default

Sets the configurator to default settings

Open

Allows you to retrieve an old and saved configuration

Save

Saves a configuration.

Save as

Save and name a new configuration

Exit

Use this to exit the PMV PC Configurator

Comport Menu

Use this to select the proper COM port to enable communication.

Device type Menu

Select D3 for D3/Logix 800

Version Menu

Select according to Software installed in the D3/Logix 800. Software version is indicated on the label of the product. It can also be read on the LCD under FULL MENU/SETUP/DEVICE DATA/SW REV and CAPABILITY.

Help Menu

View read me file

Read me file with help and information of the program.

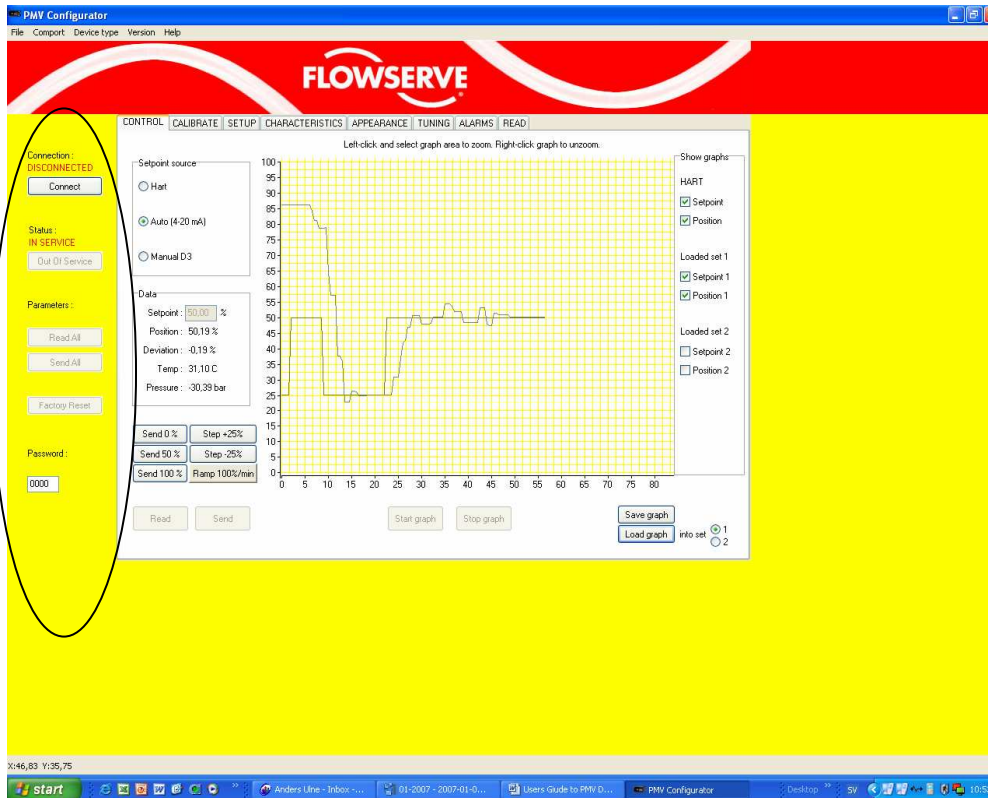
About.

Information about the Software.

VIEWS

Explanation of the function in the different windows: Control, Calibration, Setup, Characteristics, Tuning, Alarms and Read.

STATUS WINDOW /FRAME



Connection:

Click Connect to establish connection between configurator and positioner. It might be needed to click "Connect" several times to obtain a connection.

See also Trouble shooting in case no connection is established.

Status:

Set positioner In Service and Out of Service. Positioner needs to be either out of service or in service in order to make changes in the settings! A flashing dot in the upper left corner of the positioner LCD indicates that it's out of service.

See also positioner IOM.

Parameters:

Click to Read or Send info to positioner

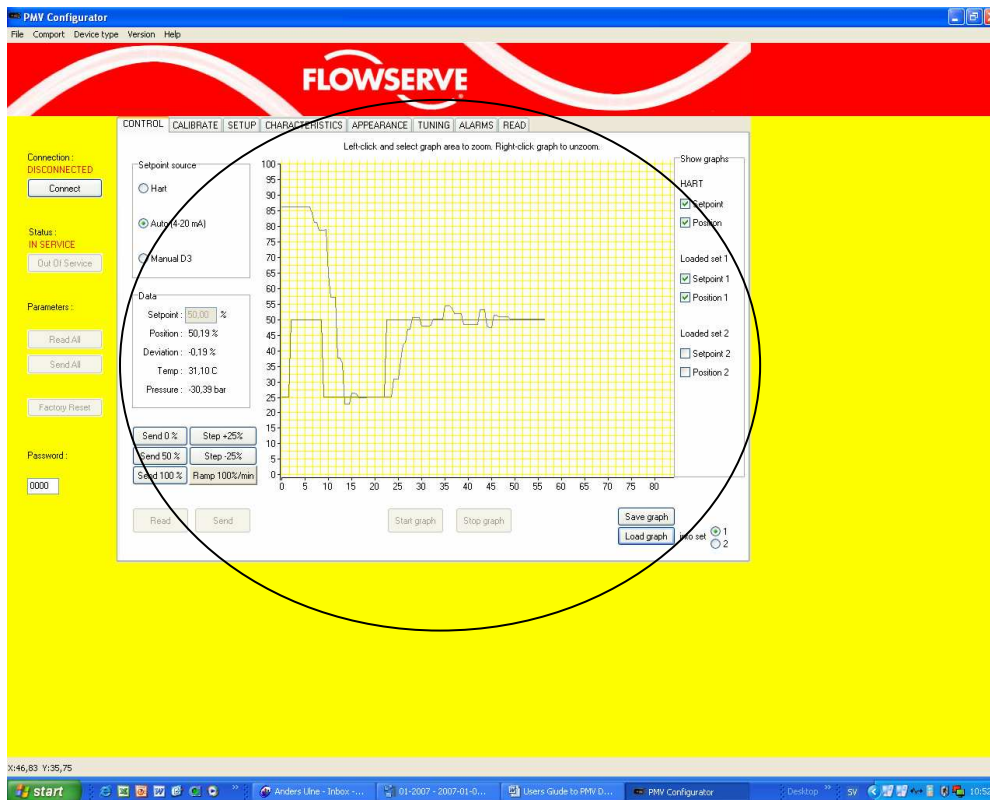
Password:

Possibility to set a password to limit access. Consists of 4 numbers from 0-9.

MAIN WINDOW

There are 8 windows that can be displayed, one at the time:
Control, Calibrate, Setup, Characteristics, Appearance, Tuning, Alarms and Read.

CONTROL WINDOW



Set point source:

HART®: Set point is controlled and provided from the PC Configurator. Enter a value in box Data and click Send. Alternative click the preset bump steps. Click Read to update Data box.

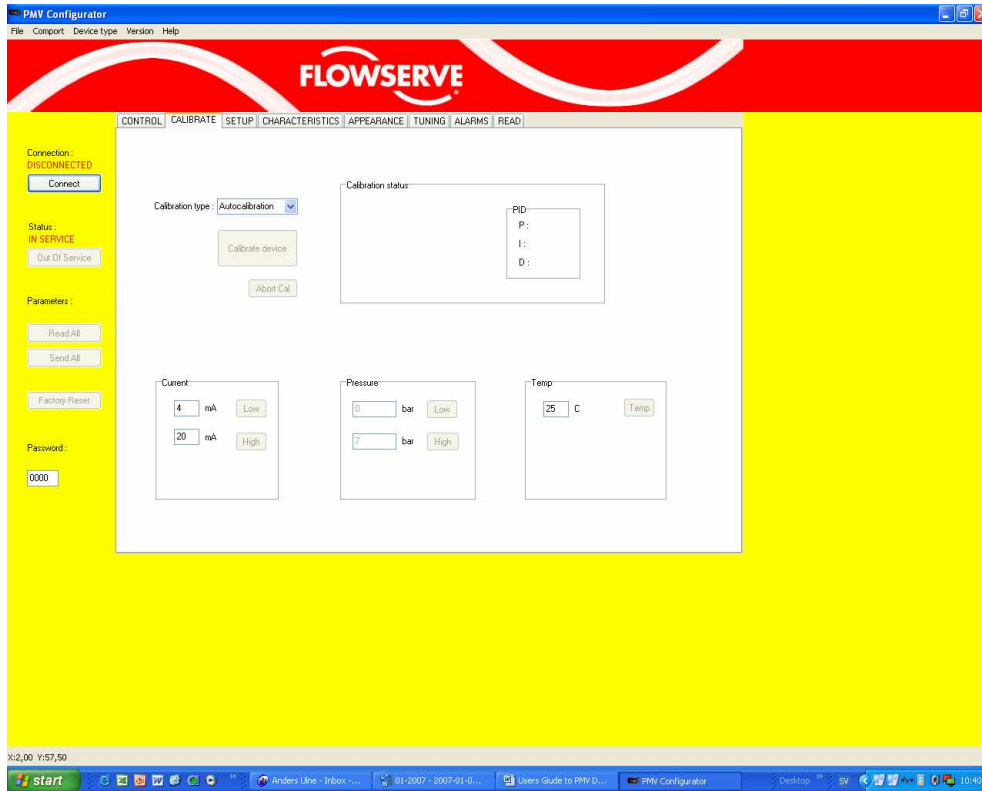
AUTO: External source is controlling and proving the set point.

MANUAL: Positioner is controlled from the local key pad on the positioner.

Start and stop graph by clicking each box.

The graph shows set point and stem position. A zoom function is available by left clicking and marking zoom area. Right click to zoom back. It's possible to save a graph.

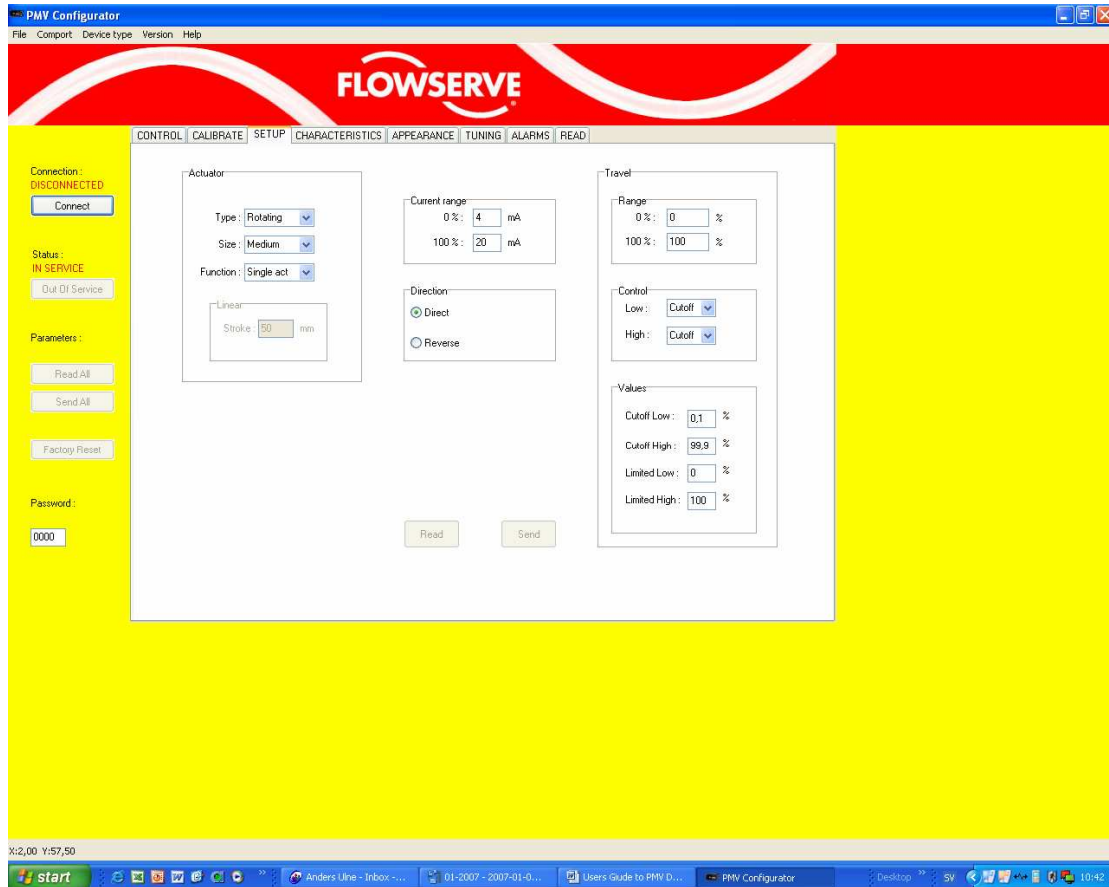
CALIBRATE WINDOW



Select Auto calibration or travel calibration

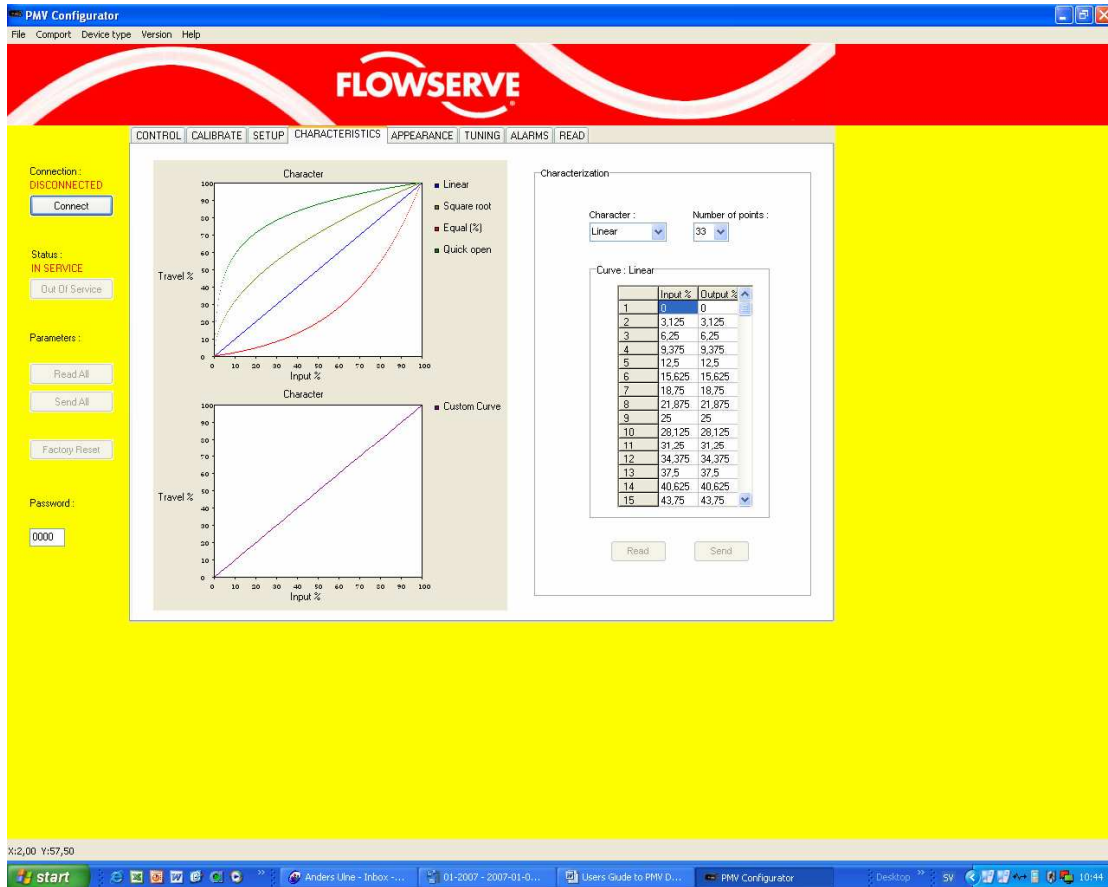
Click “Calibrate device” and unit will start to calibrate. Unit must be Out of Service in order to perform this operation.
NOTE! Calibration causes the valve/actuator assembly to move – Risk of injury due to moving parts.
Calibration progress is indicated in the Calibrate status box.

SETUP WINDOW



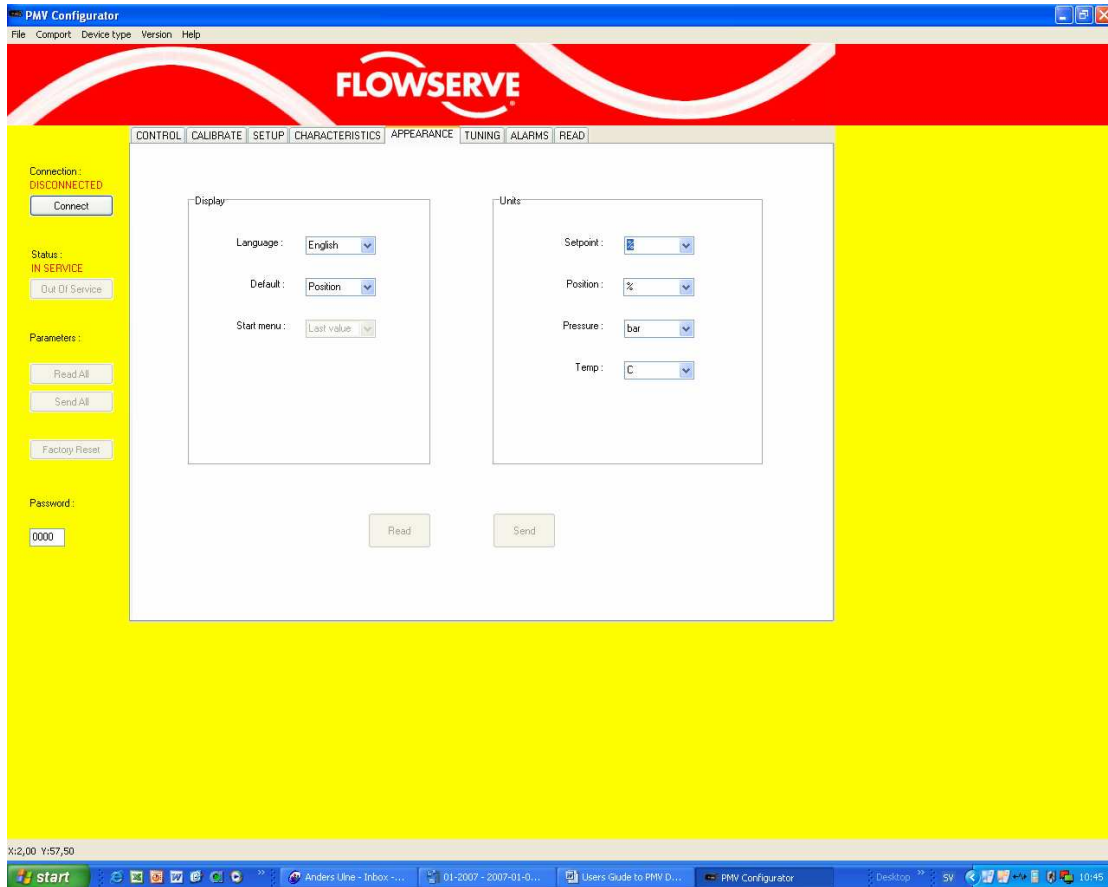
Select type of actuator, function, split range and travel controls with values.

CHARACTERISTICS WINDOW



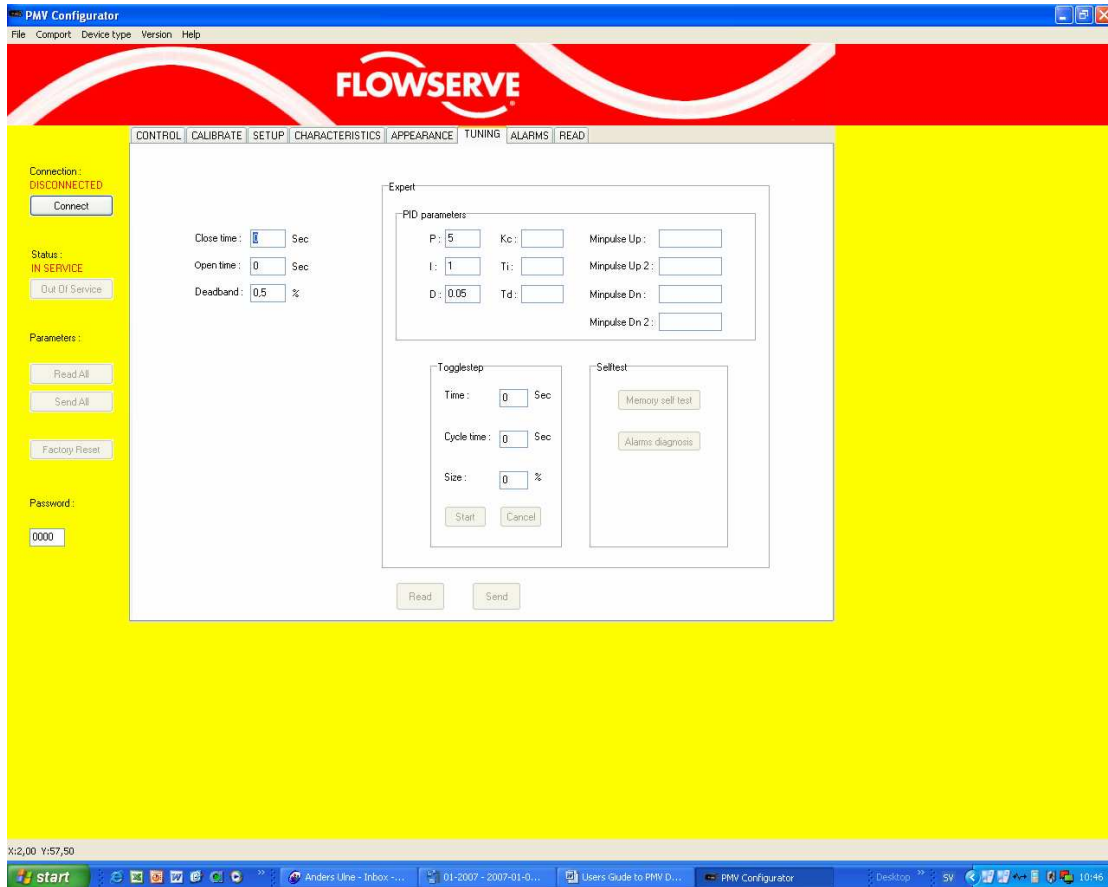
Select desired characteristic: **Linear, Square root, Equal %, Quick open or Custom curve.**
Custom curve lets you create your own curve, select number of points and enter value in output %

APPEARANCE WINDOW



Set desired language and units shown in the LCD display

TUNING WINDOW



Set Open / Close time to slow operation down

Adjust deadband 0,2 – 10%

Possibility to manually adjust auto configured PID parameters

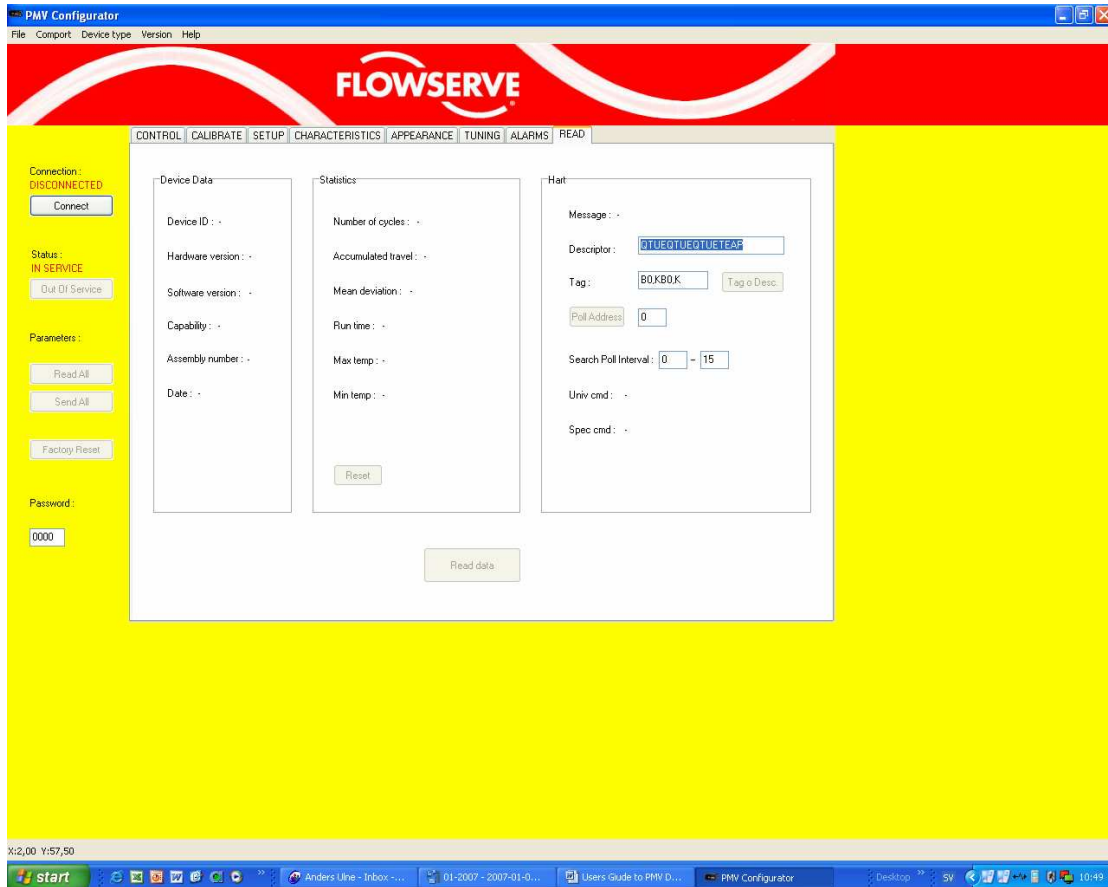
Toggle step can be used to create a controlled disturbance of the process to check/tune other process control equipment. See IOM for positioner.

ALARMS WINDOW



Set alarm levels, Enable/Disable alarms and output, set action if alarm is tripped.

READ WINDOW



Device Data

Indicates device ID, serial number, software revision.

Statistics

Indicates data accumulated and stored in the device. Can be used for maintenance and diagnostic purposes.

HART®

Lists HART® data and settings

Trouble shooting

Hardware

Dual core computer

- *Start the configurator
- *Right click on activity field at the bottom and select "Task manager"
- *Right click on PMV Configurator under Processes
- *Affinitet on the process to only one processor
- *Close task manager

To make this adjustment permanent, End hyper threading in the BIOS after stat up.

Communication

No communication

- Positioner is a non-HART® type, check with other Hand Held Communicator
- Check port settings; see below
- No input signal to positioner
- Check HART® modem and settings

To improve communication/connection:

- Open START/Settings/Control panel/System/Hardware/Device manager
- Select Ports, (COM4 or present port)
- Right click on the selected port, select Properties/Port settings. Check settings
- Bits per second : 9600
- Data bits : 8
- Parity : None
- Stop bits : 1
- Flow control: Hardware
- Click OK

Ports

- USB HART® modems may have difficulties to find the correct COM port number.
- Open START/Settings/Control panel/System/Hardware/Device manager
- Select PORTS, select advanced and select a new COM port number; this number must be 1-4.

For further assistance contact your local IT support alternatively contact your local PMV office or

Email: infopmv@flowserve.com

Tel: +46 8 555 106 00

Fax: +46 8 555 106 01

www.pmv.nu