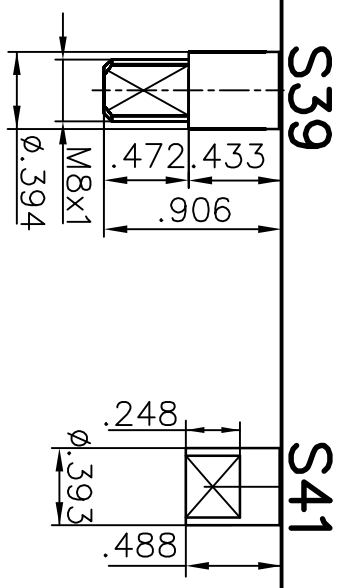
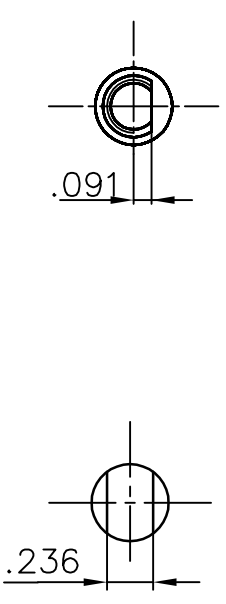
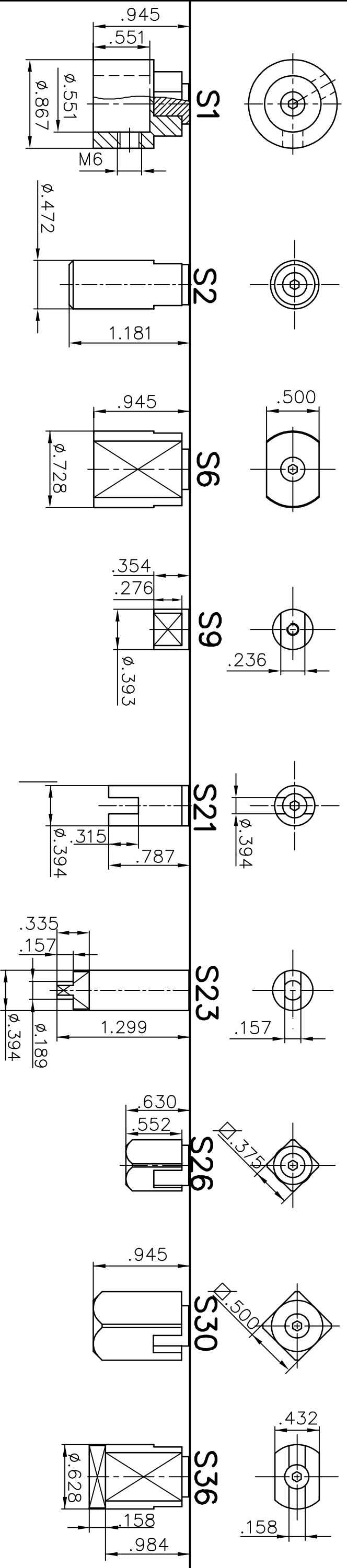


REV.	MODIFICATION	DATE	MOD. BY
1	S2 added.	120411	MRn
2	S36 updated.	130328	MRn



Note: S9, S23, S39, S39L and S41 are solid spindles.
S1, S2, S6, S21, S26, S30, and S36 are adapters to fit on Spindle S9.

Non related drawing
Modifications provided without reference to the Autodesk system

PART NO.		D3/D20	
DESCRIPTION		UNSPECIFIED TOLERANCES ACCORDING TO:	
HOLE TOL.		ISO 2768-m	
MATERIAL		SURFACE	
H13		Ra: 6,3	
FLOWSERVE PMV Positioners		PMV DRIVESHAFT DIMENSION DRAWING	
PALMSTIERNA INTERNATIONAL AB		DRAWING NO.	
KORTA GATAN 9 SE-171 54 SOLNA SWEDEN - Tel: +46(0)8 555 106 00-Fax: +46(0)8 555 106 01 - www.pmv.nu		SPNDLS_D3/D20	
DRW. BY	APPR. BY	SCALE	DATE
MRn		-	110810
PROJECTION EUROPA		ANNOTATION	