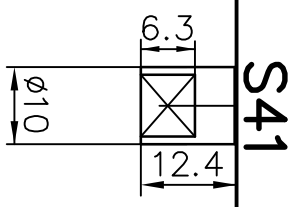
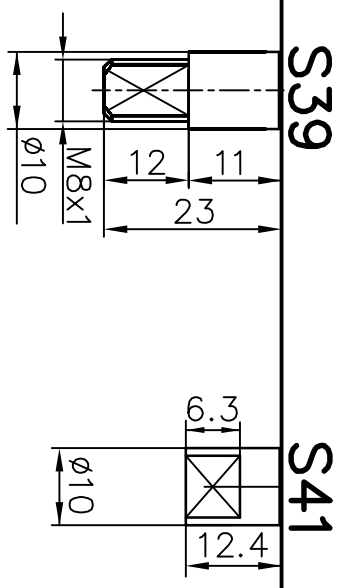
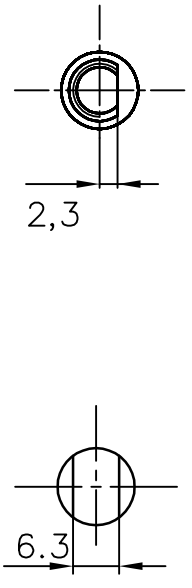
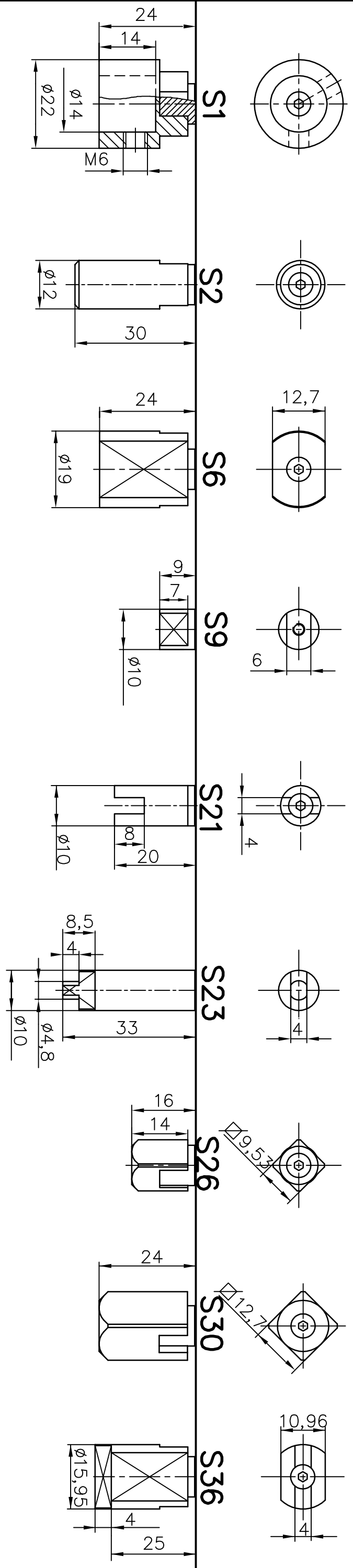


REV.	MODIFICATION	DATE	MOD. BY
1	S2 added.	120411	MRn
2	S36 updated.	130328	MRn



Note: S9, S23, S39, S39L and S41 are solid spindles.

S1, S2, S6, S21, S26, S30, and S36 are adapters to fit on Spindle S9.

Non related drawing
 Modifikation gesondt vidare referens
 to the referenced system

PART NO.		D3/D20		DESCRIPTION		MATERIAL		DIMENSION		ANNOTATION	
HOLE TOL.		H13		UNSPECIFIED TOLERANCES ACCORDING TO:		SURFACE		PROJECTION EUROPA			
ISO 2768-m		Ra: 6,3									
DRAWN BY		MRn		APPR. BY		SCALE		DATE			
DRAWING NO.		SPNDLS_D3/D20						110810			

FLOWSERVE
 PMV Positioners
 PALMSTIERNA INTERNATIONAL AB
 KORTA GATAN 9 SE-171 54 SOLNA SWEDEN - Tel: +46(0)8 555 106 00-Fax: +46(0)8 555 106 01 - www.pmv.nu